

## Information on Accreditation of UK Programmes

The Institution of Environmental Sciences (IES) through its education committee, the Committee of Heads of Environmental Sciences (CHES) offers professional accreditation for Masters, Honours and Foundation Programmes to CHES member. The scheme also covers HE provision within FE institutions.

Only CHES members may apply for accreditation. Honours Programmes should fall within the remit of the [Benchmark Statement](#) for Earth Sciences, Environmental Sciences and Environmental Studies and Masters programmes should be clearly aligned with this benchmark.

### Benefits

By joining CHES and getting your programmes accredited, you will become part of an active community which champions environmental disciplines both academically and professionally. CHES is determined to maintain the flow of highly qualified and motivated people who can meet the challenges of the future. Students enrolled on IES/CHES accredited programmes are automatically eligible for Student Membership of the IES. This grade is free of charge and the IES will send your department pre-paid postcards making it easy for your students to register.

#### For the Department

- Quality assurance: expert input into programme design and external accreditation of your degree content
- Marketing: signals to potential students and employers that your department's teaching, learning and research is aligned with high quality professional development. Accreditation is reported in a dedicated column in the new Key Information Sheets on the unistats website
- Promotion of the programme through the IES and CHES websites and careers information
- Free listing of news, events and publications on the CHES website
- Association with CHES and the IES, influential organisations leading debate, dissemination and promotion of environmental science and sustainability

#### For staff

- Networking opportunities nationally and internationally through CHES contacts, annual conference and other events
- Opportunities to engage with priority issues and influence national agendas
- Become involved in the work of partner organisations
- Monthly email update including funding opportunities, job vacancies and events
- Eligibility to sit on the Executive Committee with access to CHES meeting reports and minutes

#### For Students

- The ability to use StMIEnvSc up to the end of the calendar year in which they graduate, signalling their professional commitment, to potential employers
- First steps on an environmental career path which could take them to Chartered Status
- Electronic copies of the latest edition of our journal, environmental SCIENTIST with opportunities to publish articles and a monthly e-newsletter
- Free or reduced entry to IES events
- On graduation they automatically qualify to become Associate Members, which is offered at half price for the first year to graduates

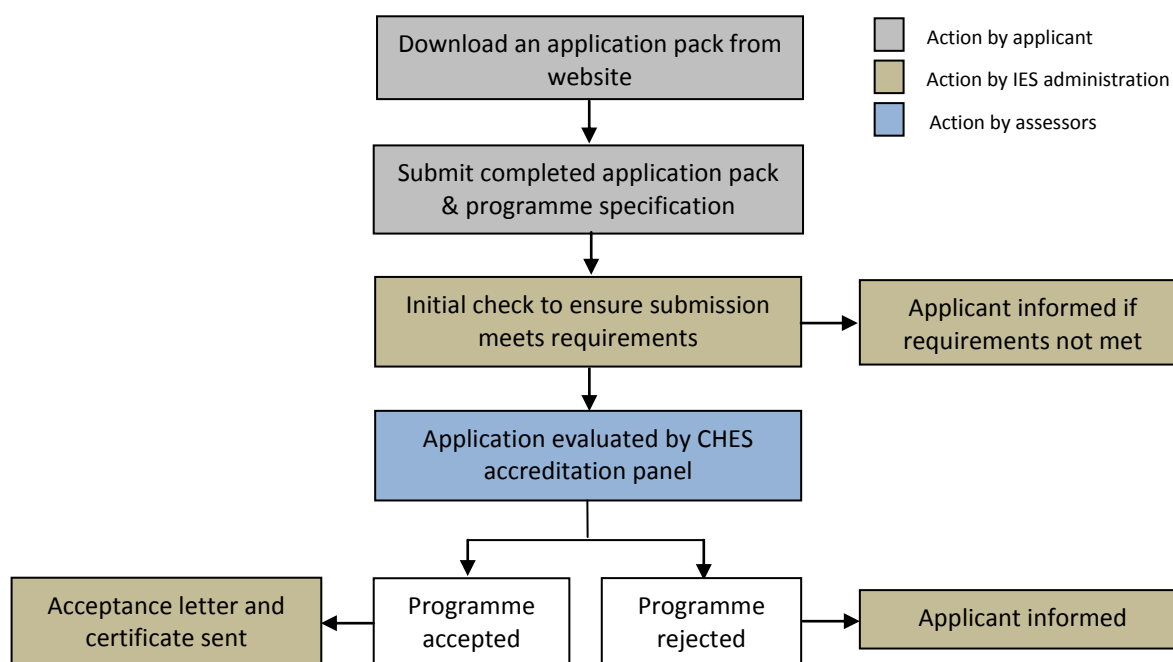
Applications for accreditation are made by submitting the completed application form which must be accompanied by the relevant current Programme Specification. **No additional documentation is required; any other materials or documents that are submitted will not be considered.**

The IES/CHES scheme seeks to avoid duplication of quality management and enhancement processes and standards (i.e. Benchmark Statements, Programme Specifications and Codes of Practice). The application form therefore consists of:

- Section A *Approaches to Learning and Teaching*; and
- Section B *Professional Practice*.

A strict word limit of 1,000 words for each of these two sections applies. A separate application form is required for each individual degree Programme. **Information provided in the application form must not duplicate the Programme Specification document; ‘cut-and-paste’ of text from programme specifications must be avoided.**

Applications will be reviewed by an Accreditation Panel of the IES and CHES Executives which meets up to four times a year. After approval, accreditation will normally last for five years. Post-accreditation, any significant programme changes (greater than 25%) need to be reported to CHES in a timely manner. The impacts of the changes will then be considered by the Accreditation Panel in relation to the requirements of accreditation and a decision made regarding continuation of the accreditation for the remainder of the five year period. If a resubmission is required and the programme accepted for accreditation, the accreditation will last for five years after approval of the resubmission.



### Screening process: initial check to ensure submission meets requirements

Any application that does not meet the requirements as specified above will be returned to the applicant without full evaluation. For example: application forms that duplicate the programme specification and submissions that exceed the word limit will be returned.

### Cost

The initial cost of accrediting a single programme is £500, with a charge of £200 for each additional Programme. In cases where referral and a visit are necessary there may be additional charges. After approval for accreditation,



there will be a recurring Accredited Membership fee of £450 per annum to cover CHES membership and the administration costs for the production and supply of graduate certificates. This is a flat fee regardless of how many programmes you have accredited. Only members of CHES may apply for or hold accreditation: accreditation will be withdrawn if CHES membership is allowed to lapse.

Any further clarification required may be obtained from [info@ches.org.uk](mailto:info@ches.org.uk) or +44 (0)20 7601 1920.